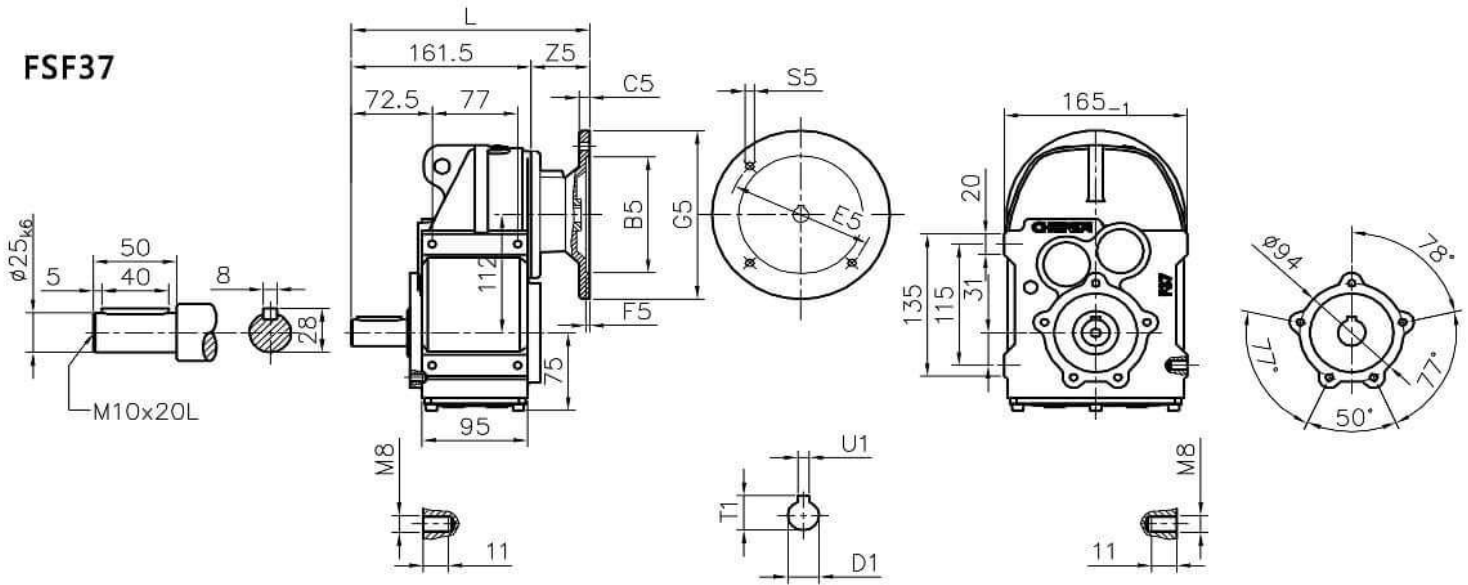


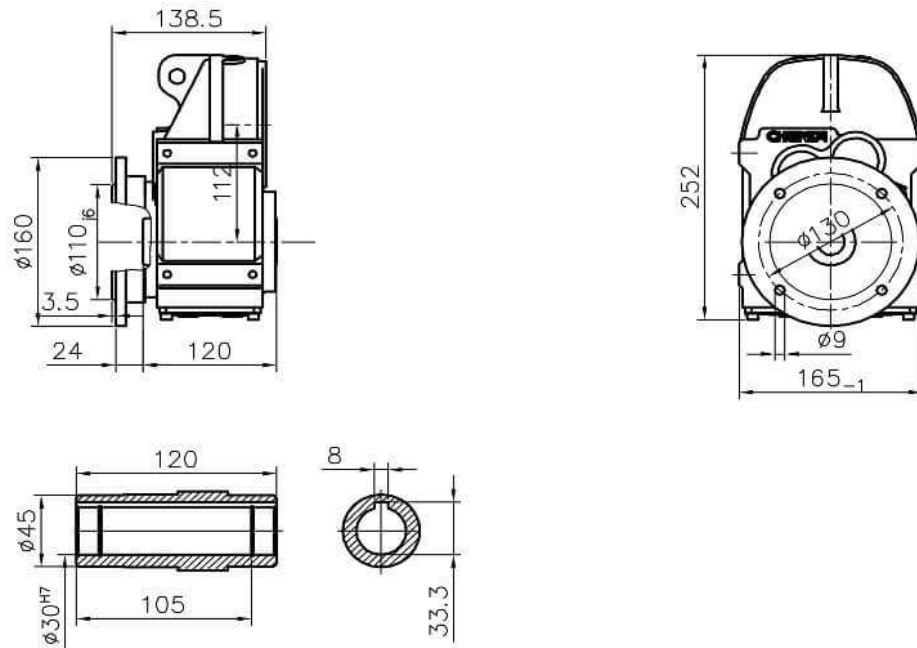


# Parallel shaft helical Gear Dimension Sheets [mm]

## FSF37



## FMF37



For the dimensions concerning the solid input shaft, please refer to the table shown at page 124.

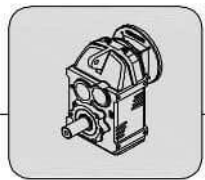
For the dimensions concerning the motor input, please refer to the table shown at page 123.

入力為貫心軸之尺寸表・請參閱第124頁。

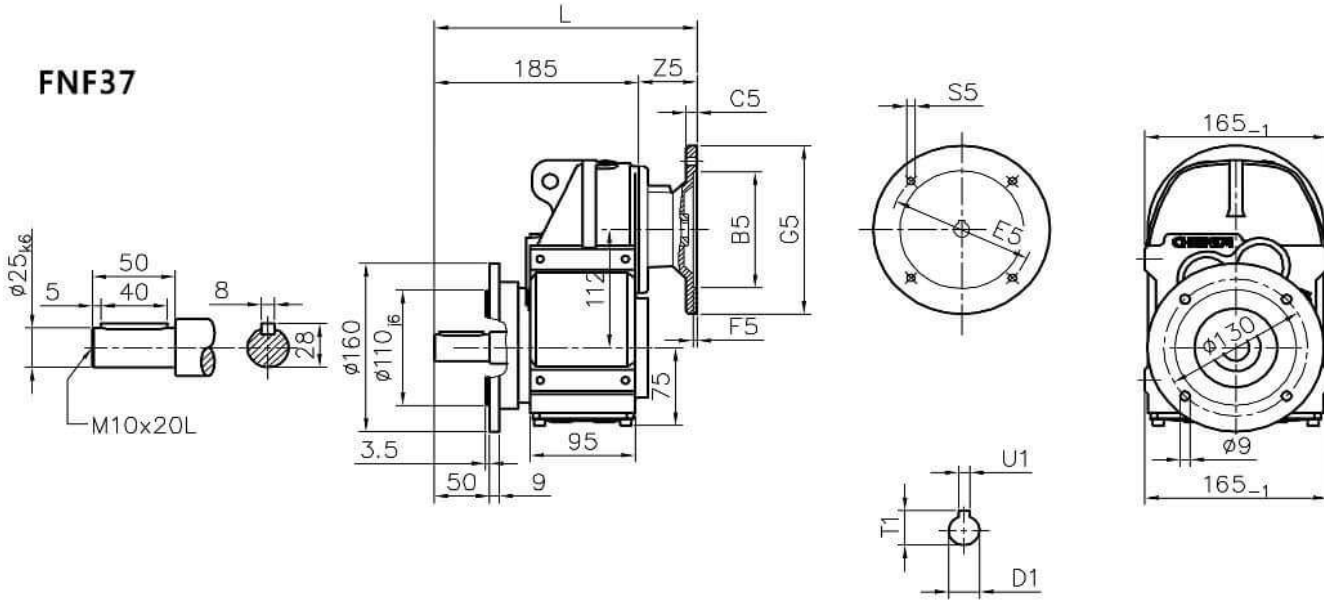
入力為馬達直結型之尺寸表・請參閱第123頁。

	B5	C5	E5	F5	G5	L	S5	Z5	D1	T1	U1
IEC 63 *	95	10	115	4	140	214.5	M8	53	11	12.8	4
IEC 71	110	10	130	4	160	214.5	M8	53	14	16.3	5
IEC 80	130	12	165	5	200	232.5	M10	71	19	21.8	6
IEC 90	130	12	165	5	200	232.5	M10	71	24	27.3	8

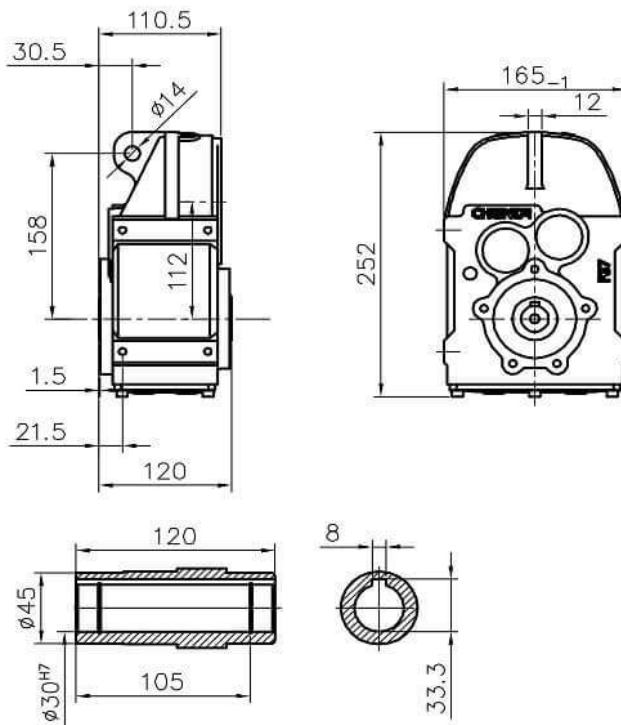
\* 台灣東元馬達請參閱第122頁。



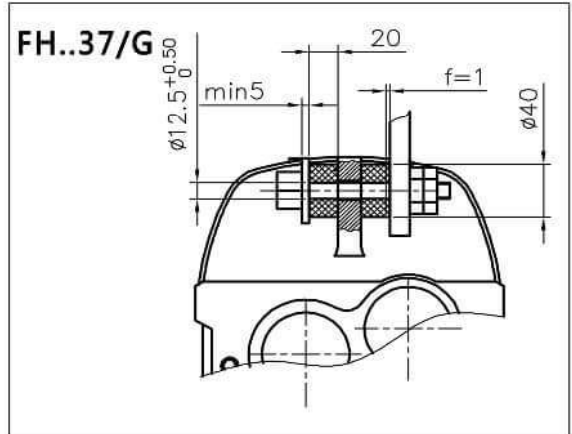
**FNF37**



**FHF37**



**FH..37/G**



	B5	C5	E5	F5	G5	L	S5	Z5	D1	T1	U1
IEC 63 *	95	10	115	4	140	238	M8	53	11	12.8	4
IEC 71	110	10	130	4	160	238	M8	53	14	16.3	5
IEC 80	130	12	165	5	200	256	M10	71	19	21.8	6
IEC 90	130	12	165	5	200	256	M10	71	24	27.3	8

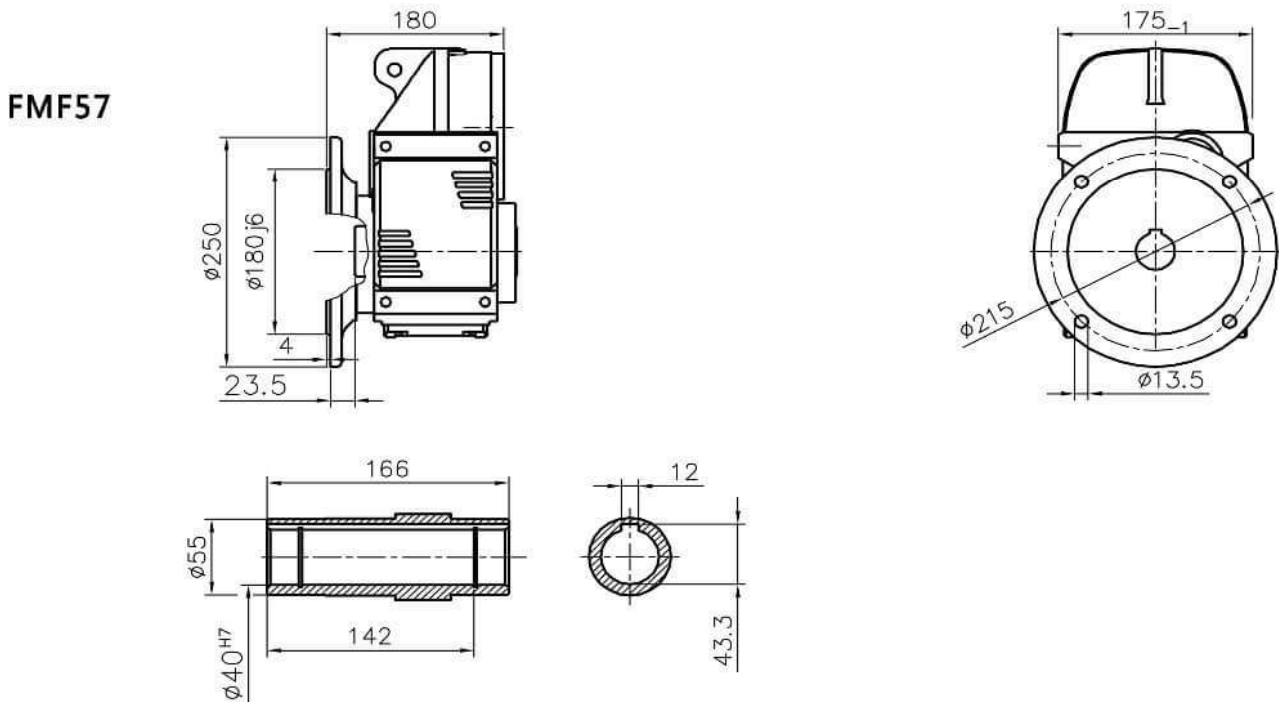
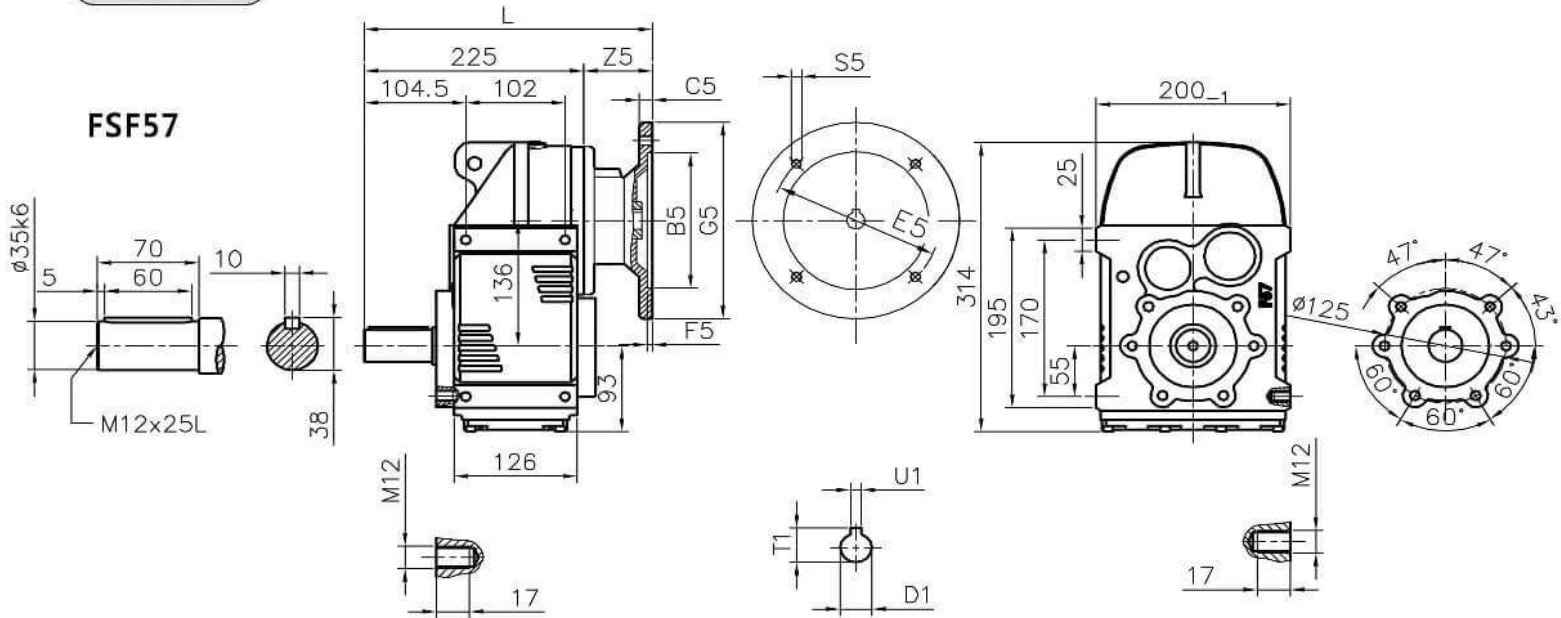
\* 台灣東元馬達請參閱第122頁。







# Parallel shaft helical Gear Dimension Sheets [mm]



For the dimensions concerning the solid input shaft, please refer to the table shown at page 124.

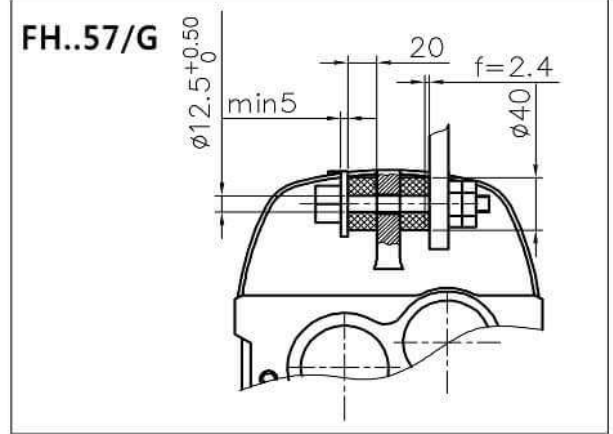
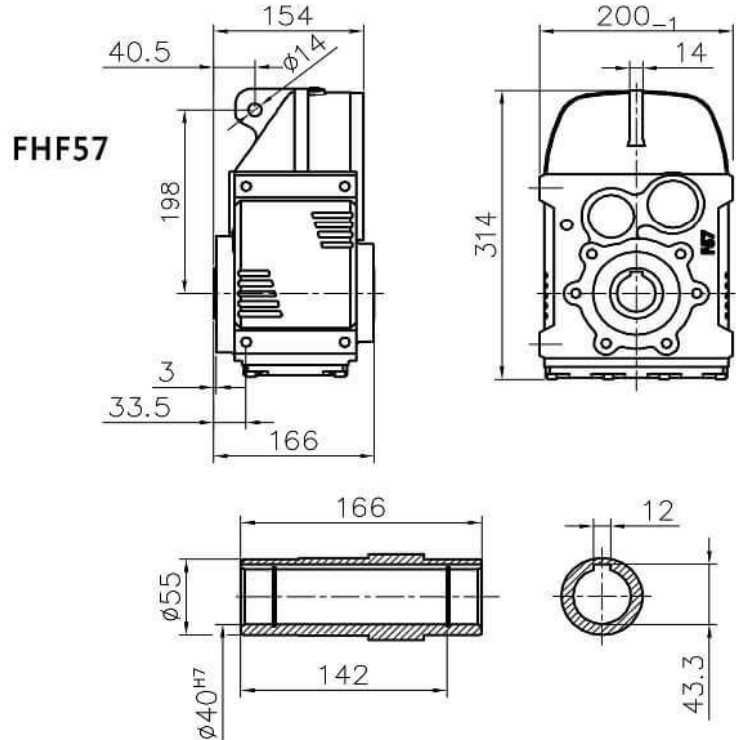
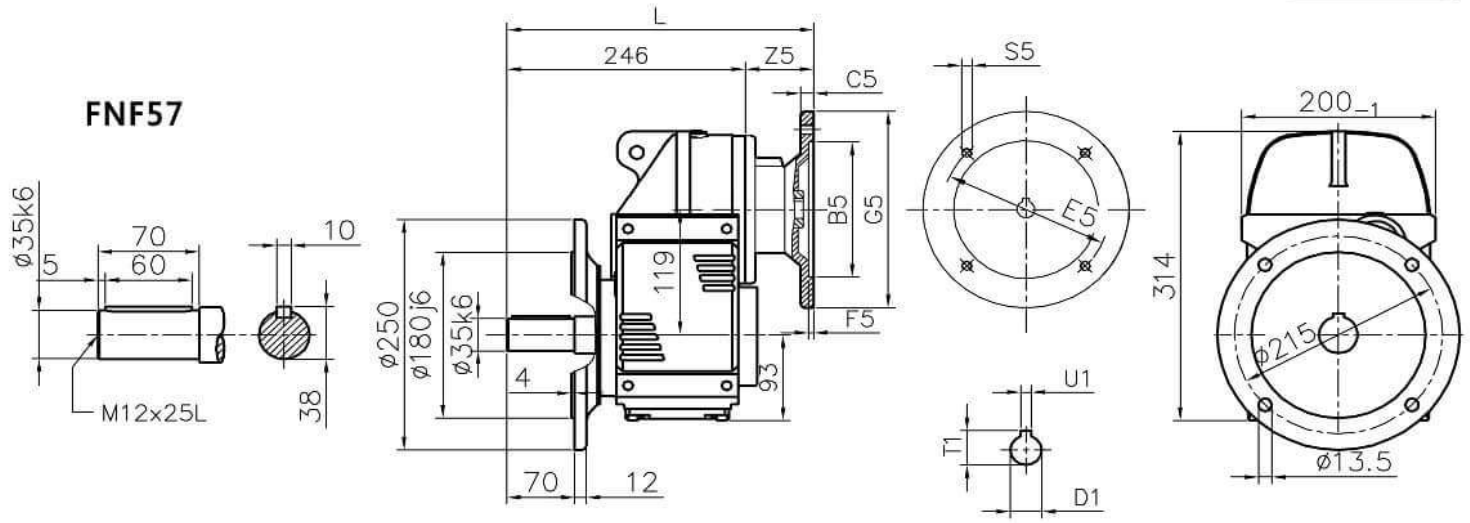
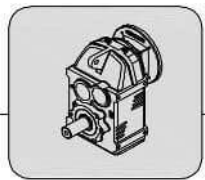
For the dimensions concerning the motor input, please refer to the table shown at page 123.

入力為實心軸之尺寸表，請參閱第124頁。

入力為馬達直結型之尺寸表，請參閱第123頁。

	B5	C5	E5	F5	G5	L	S5	Z5	D1	T1	U1
IEC 63 *	95	10	115	4	140	271.5	M8	46.5	11	12.8	4
IEC 71	110	10	130	4	160	271.5	M8	46.5	14	16.3	5
IEC 80	130	12	165	5	200	289.5	M10	64.5	19	21.8	6
IEC 90	130	12	165	5	200	289.5	M10	64.5	24	27.3	8
IEC 100	180	15	215	5	250	306	M12	81	28	31.3	8
IEC 112	180	15	215	5	250	306	M12	81	28	31.3	8

\* 台灣東元馬達請參閱第122頁。



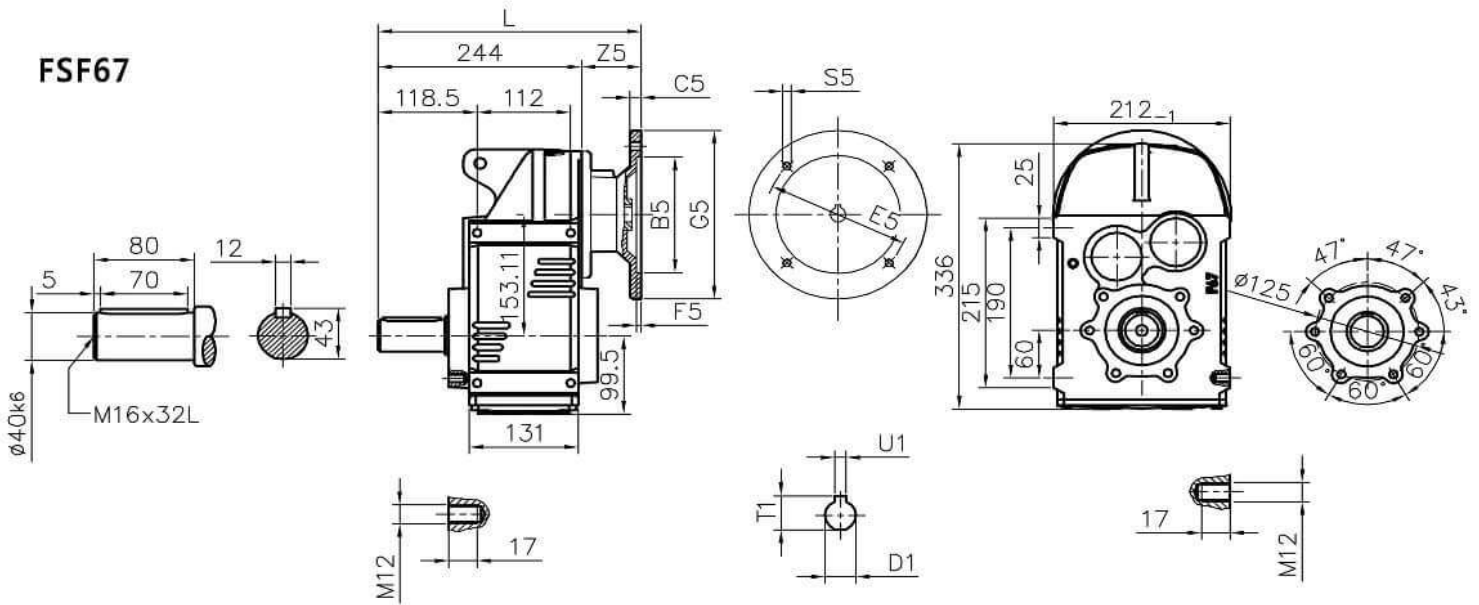
	B5	C5	E5	F5	G5	L	S5	Z5	D1	T1	U1
IEC 63 *	95	10	115	4	140	292.5	M8	46.5	11	12.8	4
IEC 71	110	10	130	4	160	292.5	M8	46.5	14	16.3	5
IEC 80	130	12	165	5	200	310.5	M10	64.5	19	21.8	6
IEC 90	130	12	165	5	200	310.5	M10	64.5	24	27.3	8
IEC 100	180	15	215	5	250	327	M12	81	28	31.3	8
IEC 112	180	15	215	5	250	327	M12	81	28	31.3	8

\* 台灣東元馬達請參閱第122頁。

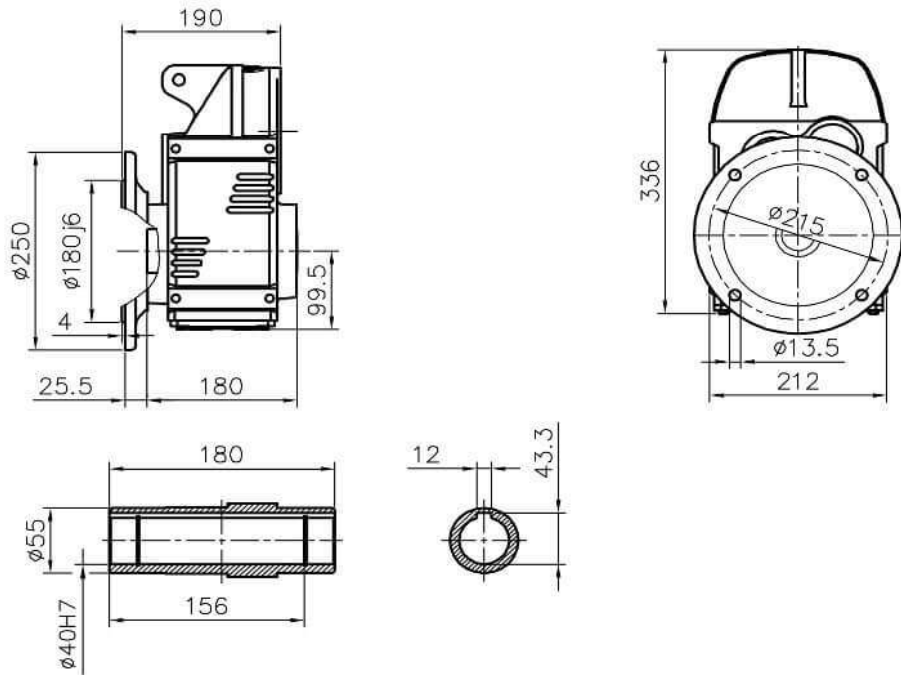


# Parallel shaft helical Gear Dimension Sheets [mm]

## FSF67



## FMF67



For the dimensions concerning the solid input shaft, please refer to the table shown at page 124.

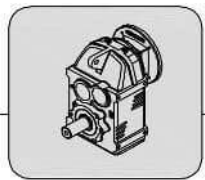
For the dimensions concerning the motor input, please refer to the table shown at page 123.

入力為實心軸之尺寸表，請參閱第124頁。

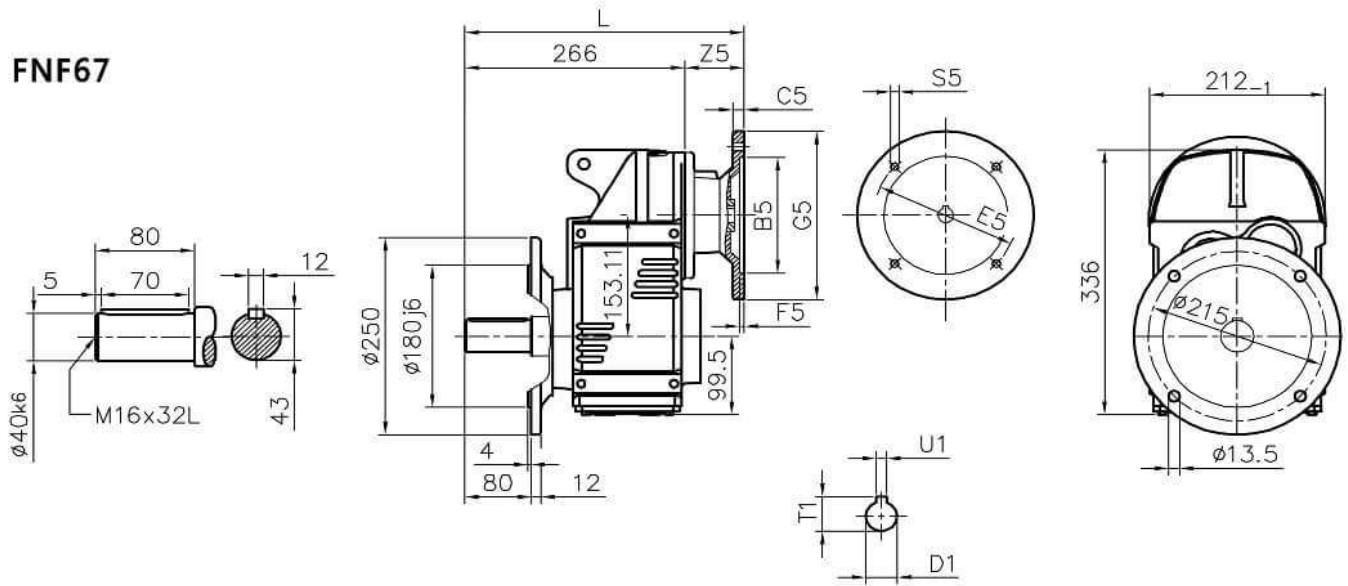
入力為馬達直結型之尺寸表，請參閱第123頁。

	B5	C5	E5	F5	G5	L	S5	Z5	D1	T1	U1
IEC 63 *	95	10	115	4	140	290.5	M8	46.5	11	12.8	4
IEC 71	110	10	130	4	160	290.5	M8	46.5	14	16.3	5
IEC 80	130	12	165	5	200	308.5	M10	64.5	19	21.8	6
IEC 90	130	12	165	5	200	308.5	M10	64.5	24	27.3	8
IEC 100	180	15	215	5	250	325	M12	81	28	31.3	8
IEC 112	180	15	215	5	250	325	M12	81	28	31.3	8

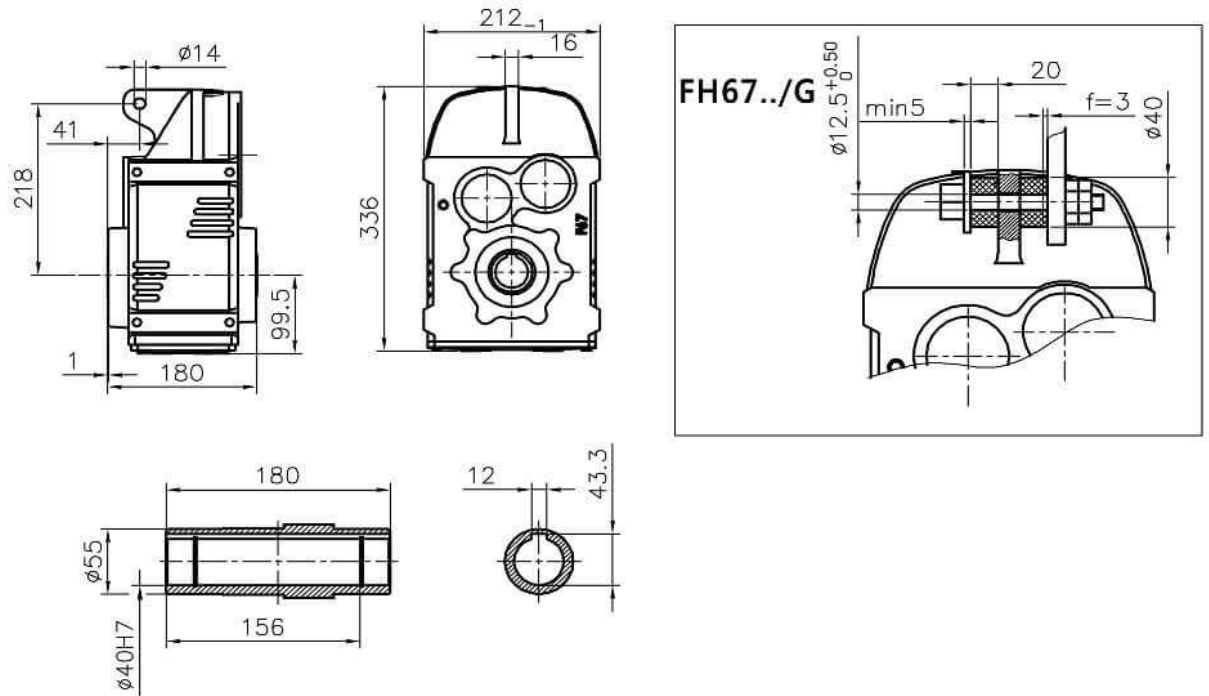
\* 台灣東元馬達請參閱第122頁。



**FNF67**



**FHF67**



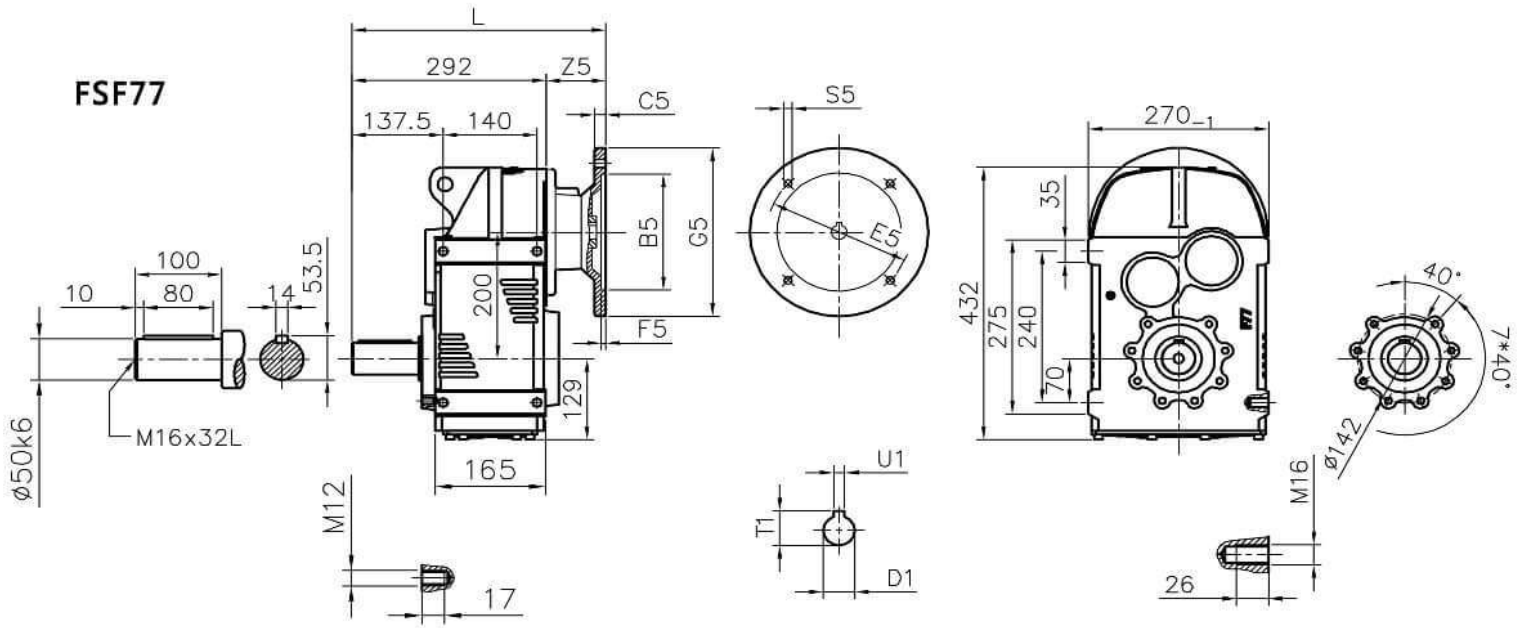
	B5	C5	E5	F5	G5	L	S5	Z5	D1	T1	U1
IEC 63 *	95	10	115	4	140	312.5	M8	46.5	11	12.8	4
IEC 71	110	10	130	4	160	312.5	M8	46.5	14	16.3	5
IEC 80	130	12	165	5	200	330.5	M10	64.5	19	21.8	6
IEC 90	130	12	165	5	200	330.5	M10	64.5	24	27.3	8
IEC 100	180	15	215	5	250	347	M12	81	28	31.3	8
IEC 112	180	15	215	5	250	347	M12	81	28	31.3	8

\* 台灣東元馬達請參閱第122頁。

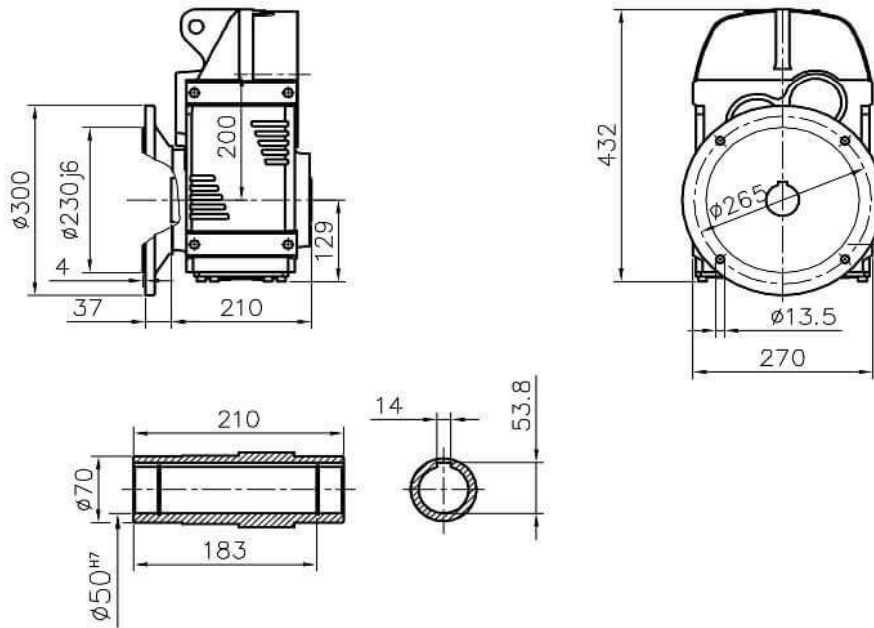




# Parallel shaft helical Gear Dimension Sheets [mm]



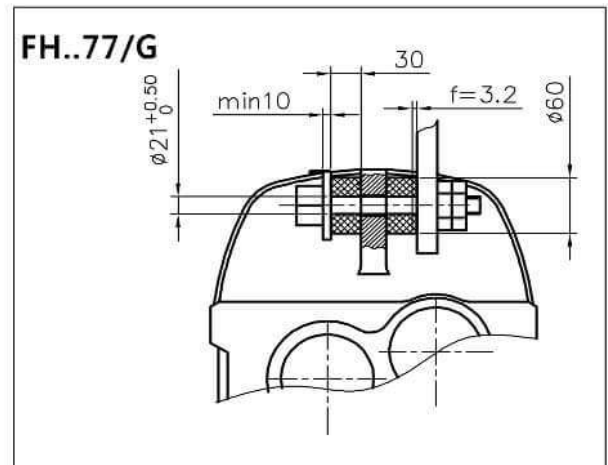
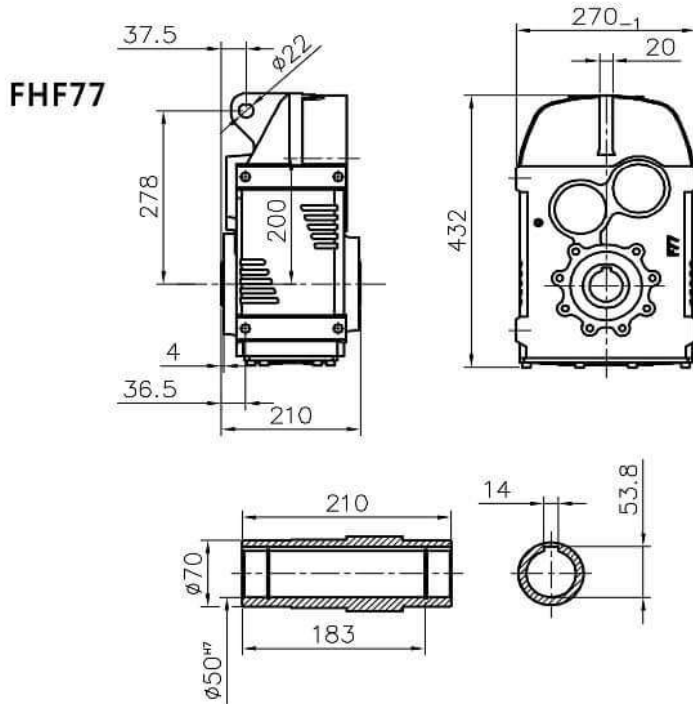
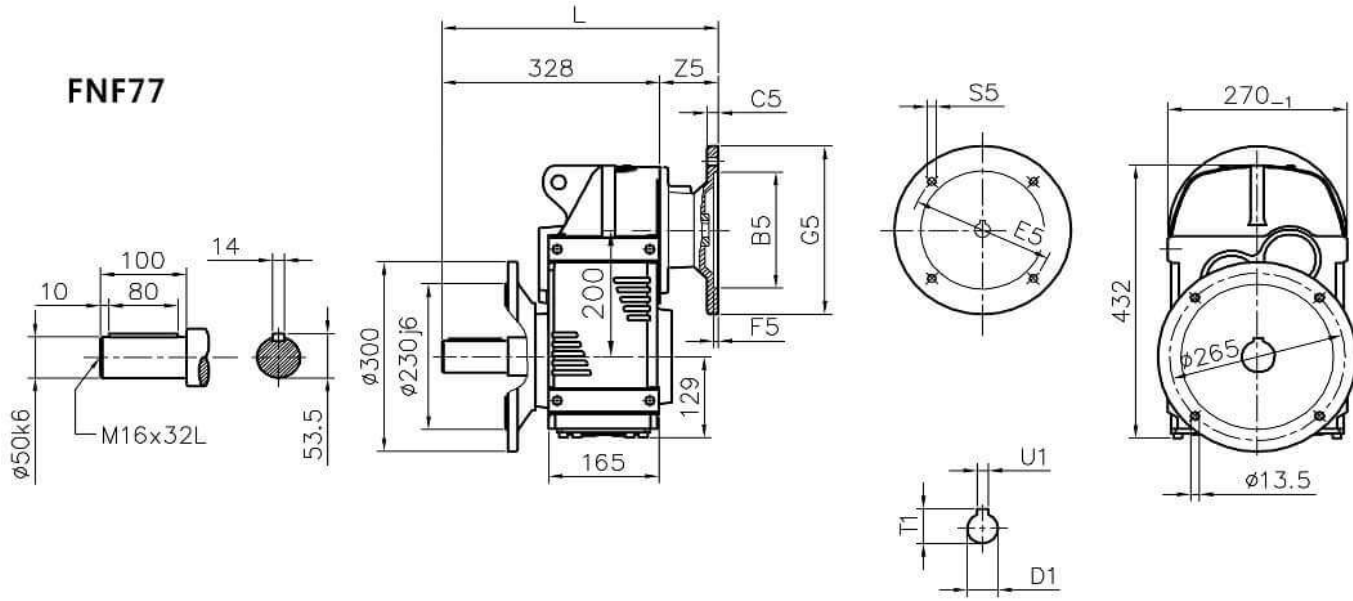
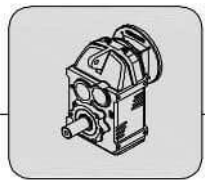
**FMF77**



For the dimensions concerning the solid input shaft, please refer to the table shown at page 124.  
For the dimensions concerning the motor input, please refer to the table shown at page 123.

入力為貫心軸之尺寸表、請參閱第124頁。  
入力為馬達直結型之尺寸表、請參閱第123頁。

	B5	C5	E5	F5	G5	L	S5	Z5	D1	T1	U1
IEC 80	130	12	165	5	200	351	M10	59	19	21.8	6
IEC 90	130	12	165	5	200	351	M10	59	24	27.3	8
IEC 100	180	15	215	5	250	367.5	M12	75.5	28	31.3	8
IEC 112	180	15	215	5	250	367.5	M12	75.5	28	31.3	8
IEC 132	230	16	265	6	300	416	M12	124	38	41.3	10

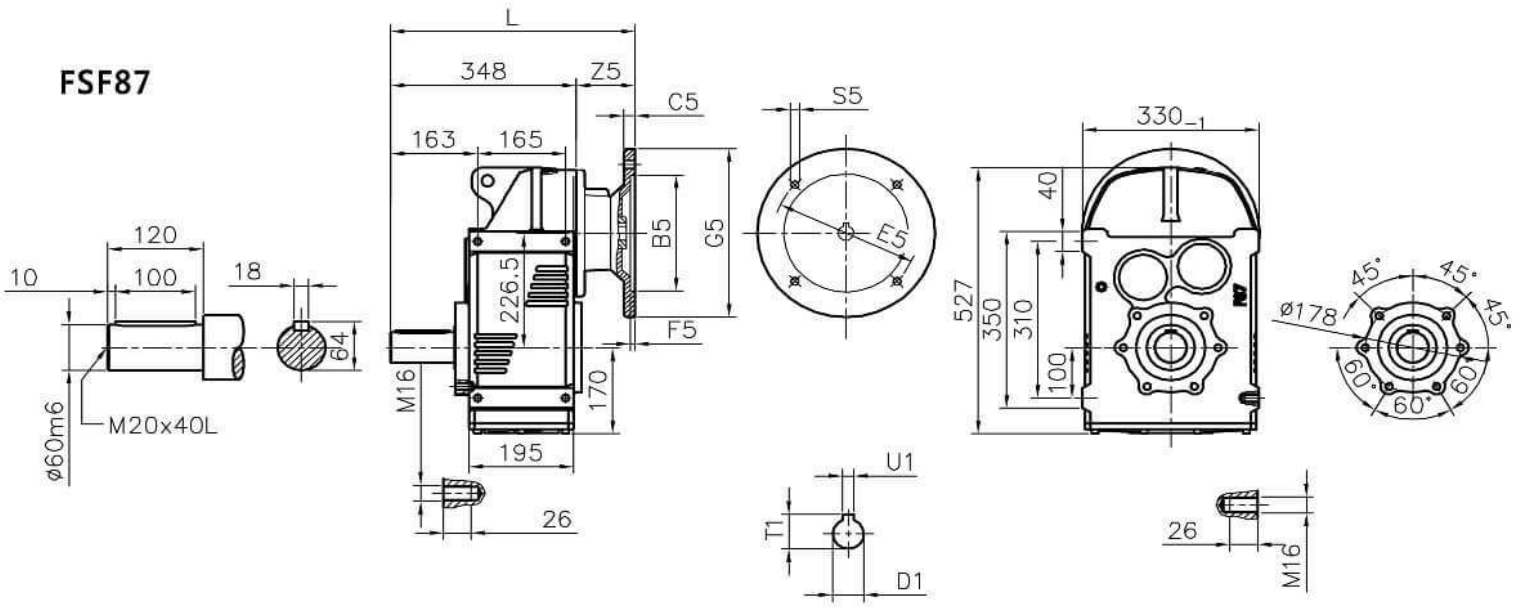


	B5	C5	E5	F5	G5	L	S5	Z5	D1	T1	U1
IEC 80	130	12	165	5	200	387	M10	59	19	21.8	6
IEC 90	130	12	165	5	200	387	M10	59	24	27.3	8
IEC 100	180	15	215	5	250	403.5	M12	75.5	28	31.3	8
IEC 112	180	15	215	5	250	403.5	M12	75.5	28	31.3	8
IEC 132	230	16	265	6	300	452	M12	124	38	41.3	10

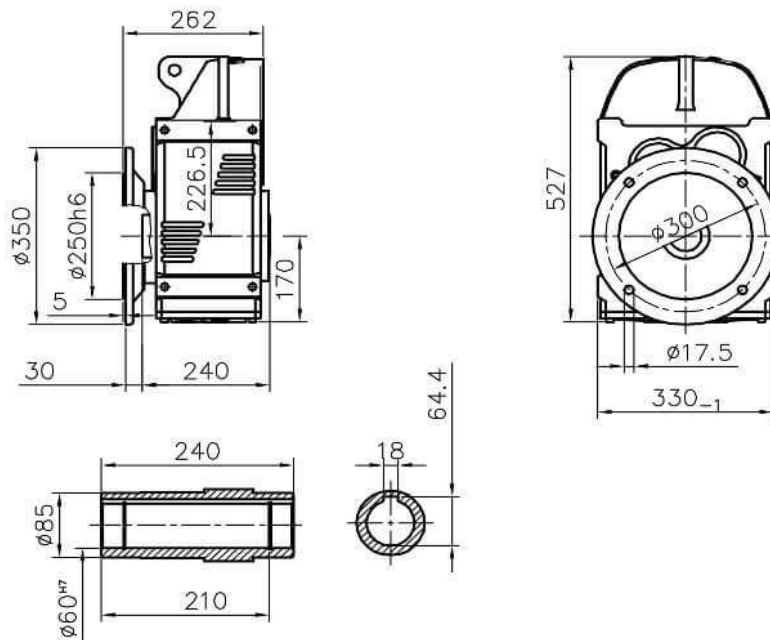


# Parallel shaft helical Gear Dimension Sheets [mm]

## FSF87



## FMF87



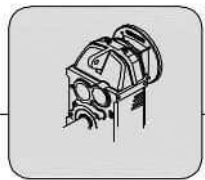
For the dimensions concerning the solid input shaft, please refer to the table shown at page 124.

For the dimensions concerning the motor input, please refer to the table shown at page 123.

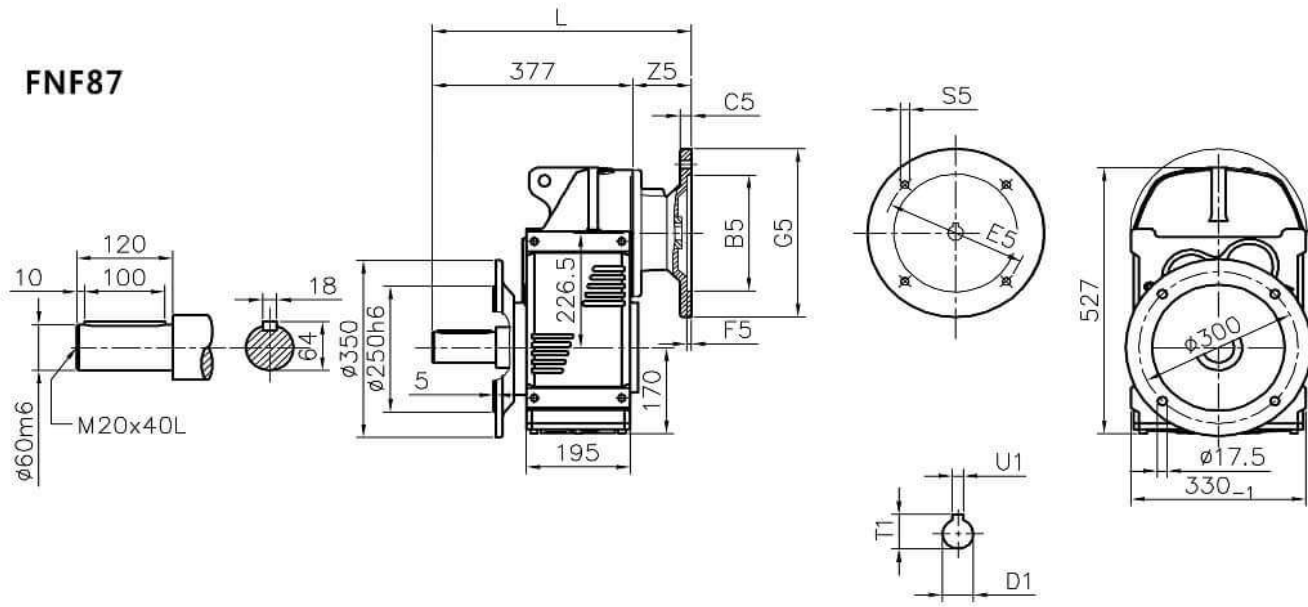
入力為實心軸之尺寸表・請參閱第124頁。

入力為馬達直結型之尺寸表・請參閱第123頁。

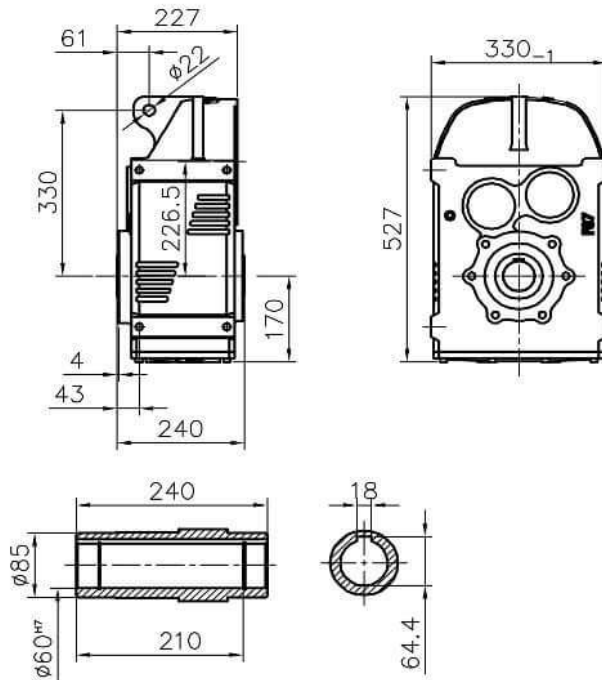
	B5	C5	E5	F5	G5	L	S5	Z5	D1	T1	U1
IEC 80	130	12	165	5	200	397.5	M10	49.5	19	21.8	6
IEC 90	130	12	165	5	200	397.5	M10	49.5	24	27.3	8
IEC 100	180	15	215	5	250	414	M12	66	28	31.3	8
IEC 112	180	15	215	5	250	414	M12	66	28	31.3	8
IEC 132	230	16	265	6	300	462.5	M12	114.5	38	41.3	10
IEC 160	250	20	300	6	350	498.5	M16	150.5	42	45.3	12



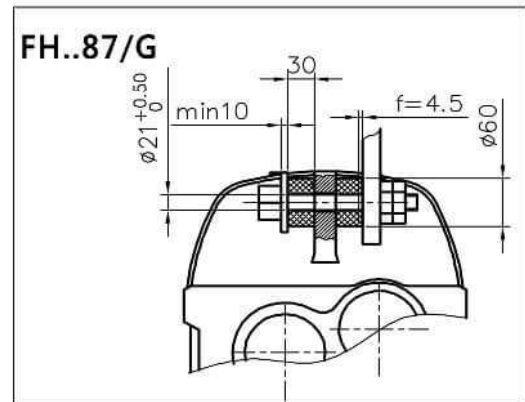
**FNF87**



**FHF87**



**FH..87/G**

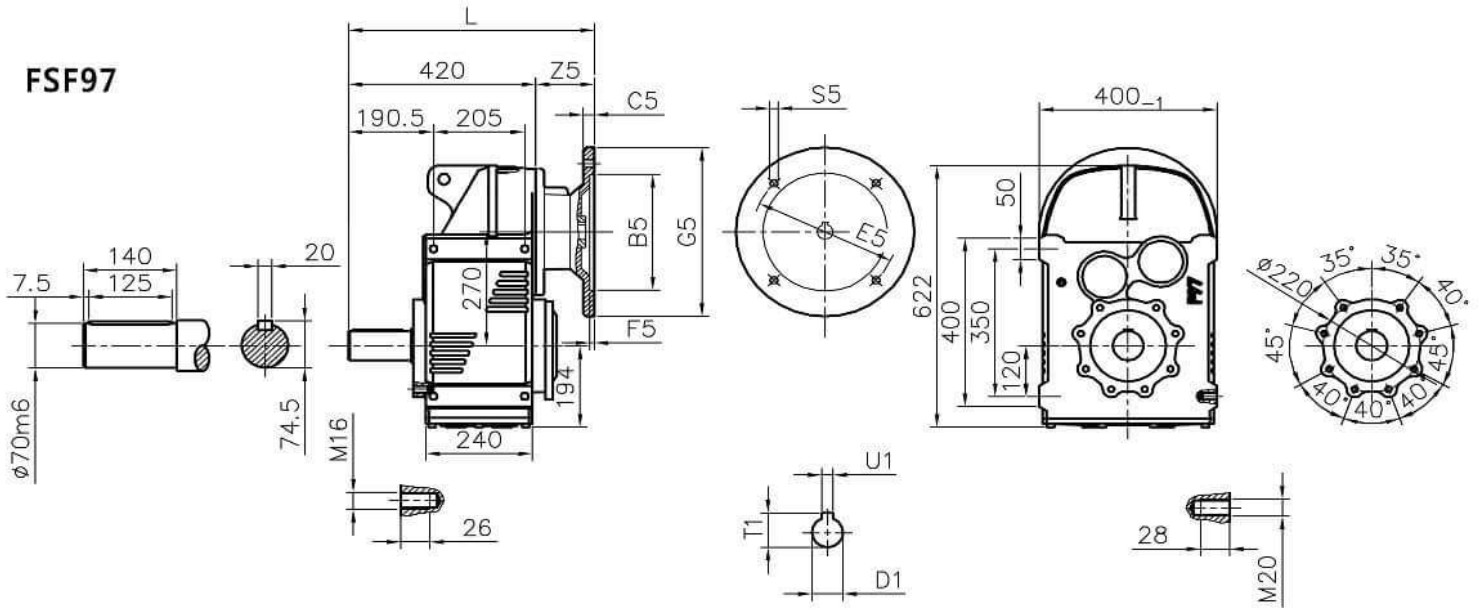


	B5	C5	E5	F5	G5	L	S5	Z5	D1	T1	U1
IEC 80	130	12	165	5	200	426.5	M10	49.5	19	21.8	6
IEC 90	130	12	165	5	200	426.5	M10	49.5	24	27.3	8
IEC 100	180	15	215	5	250	443	M12	66	28	31.3	8
IEC 112	180	15	215	5	250	443	M12	66	28	31.3	8
IEC 132	230	16	265	6	300	491.5	M12	114.5	38	41.3	10
IEC 160	250	20	300	6	350	527.5	M16	150.5	42	45.3	12

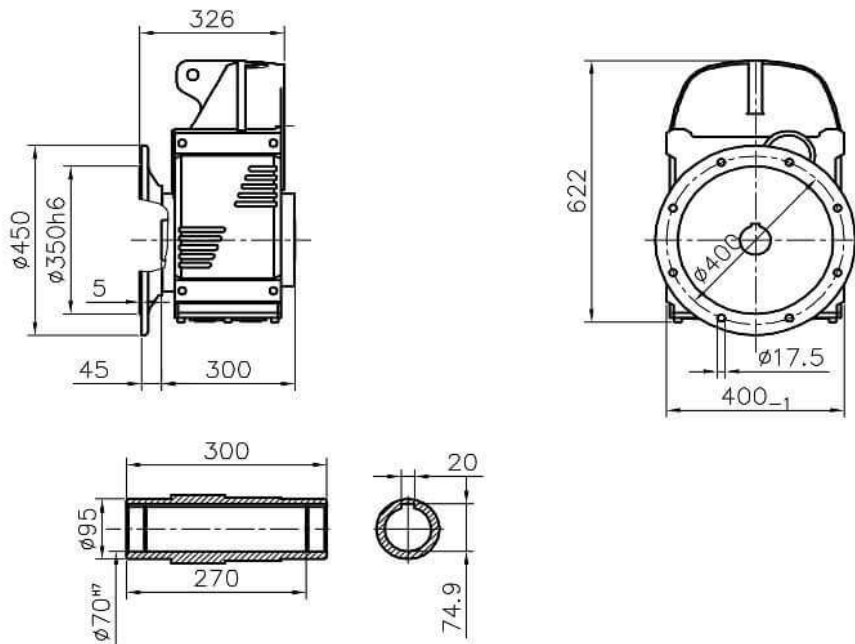


# Parallel shaft helical Gear Dimension Sheets [mm]

## FSF97



## FMF97



For the dimensions concerning the solid input shaft, please refer to the table shown at page 124.

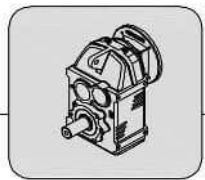
For the dimensions concerning the motor input, please refer to the table shown at page 123.

入力為實心軸之尺寸表・請參閱第124頁。

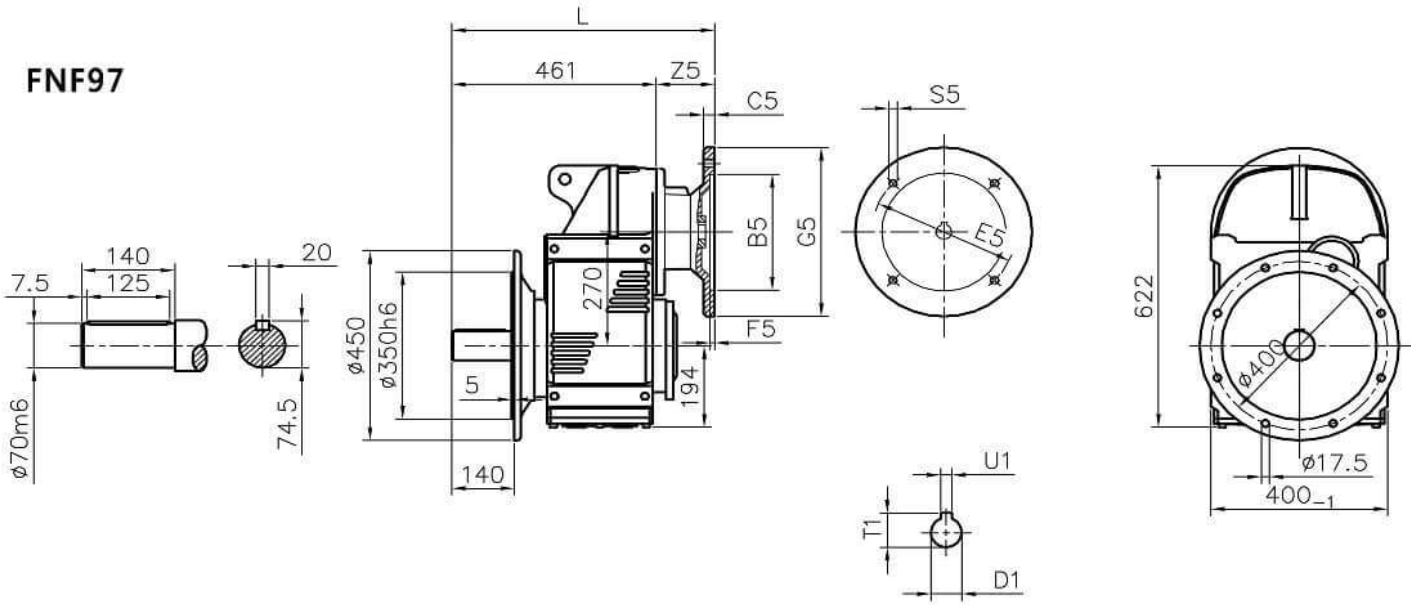
入力為馬達直結型之尺寸表・請參閱第123頁。

	B5	C5	E5	F5	G5	L	S5	Z5	D1	T1	U1
IEC 100	180	15	215	5	250	482	M12	62	28	31.3	8
IEC 112	180	15	215	5	250	482	M12	62	28	31.3	8
IEC 132	230	16	265	6	300	526.5	M12	106.5	38	41.3	10
IEC 160	250	20	300	6	350	562.5	M16	142.5	42	45.3	12
IEC 180 *	250	20	300	6	350	571.5	M16	151.5	48	51.8	14

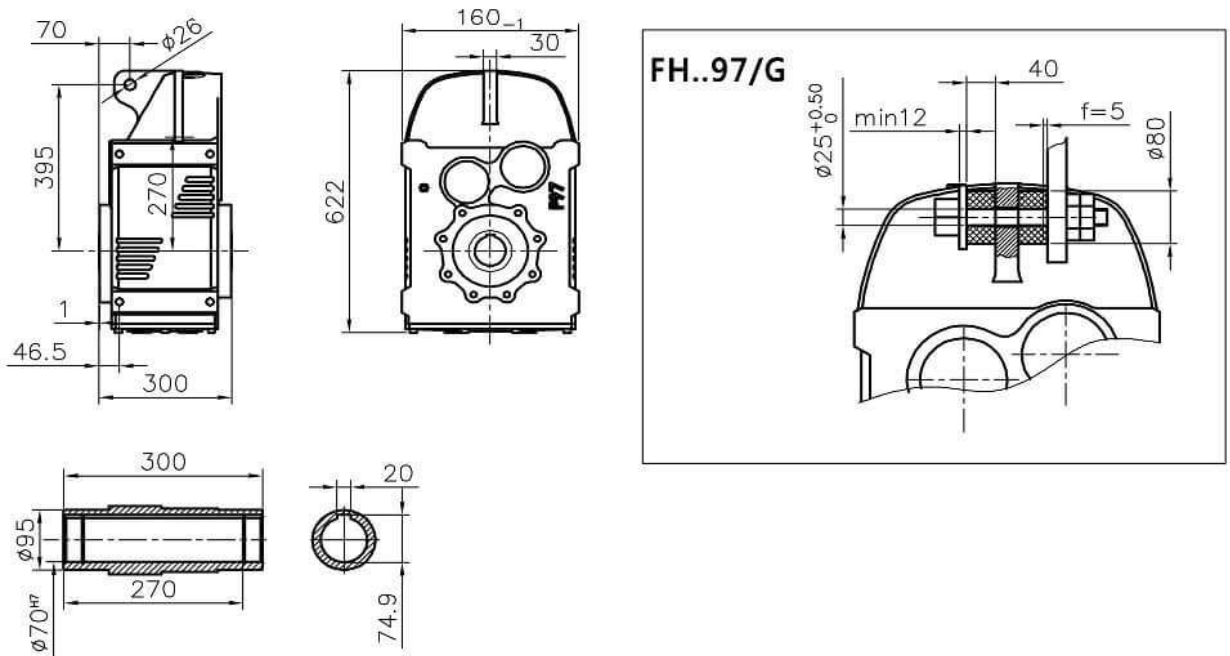
\* 台灣東元馬達請參閱第122頁。



**FNF97**

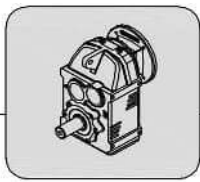


**FHF97**

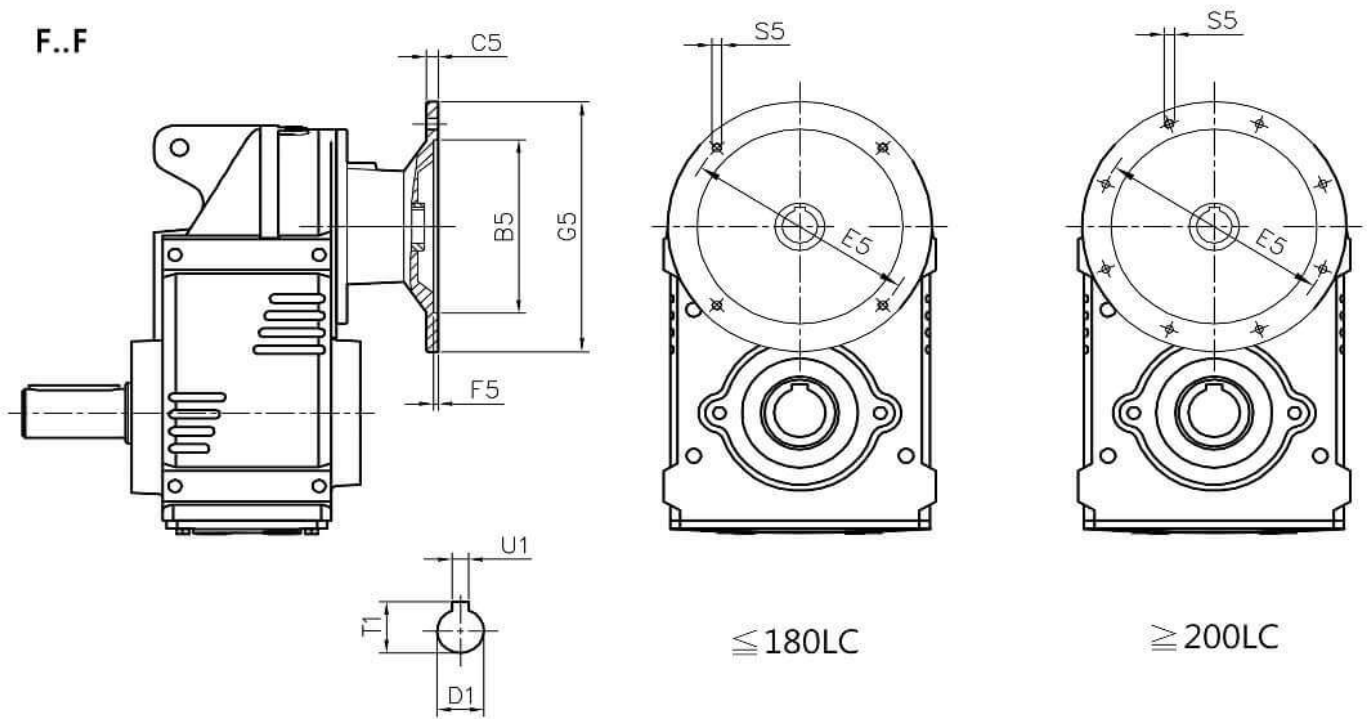


	B5	C5	E5	F5	G5	L	S5	Z5	D1	T1	U1
IEC 100	180	15	215	5	250	523	M12	62	28	31.3	8
IEC 112	180	15	215	5	250	523	M12	62	28	31.3	8
IEC 132	230	16	265	6	300	567.5	M12	106.5	38	41.3	10
IEC 160	250	20	300	6	350	603.5	M16	142.5	42	45.3	12
IEC 180*	250	20	300	6	350	612.5	M16	151.5	48	51.8	14

\* 台灣東元馬達請參閱第122頁。



法蘭入力 Input Flanges



輸入馬力 HP - 4P	IEC Frame	B5	C5	E5	F5	G5	S5	D1	T1	U1
0.25	63	110	10	130	4	160	M8	11	12.8	4
0.5	71	110	10	130	4	160	M8	14	16.3	5
1	80	130	12	165	5	200	M10	19	21.8	6
2	90L	130	12	165	5	200	M10	24	27.3	8
3	100L	180	15	215	5	250	M12	28	31.3	8
5	112M	180	15	215	5	250	M12	28	31.3	8
7.5	132S	230	16	265	6	300	M12	38	41.3	10
10	132M	230	16	265	6	300	M12	38	41.3	10
15	160M	250	20	300	6	350	M16	42	45.3	12
20	160L	250	20	300	6	350	M16	42	45.3	12
25 / 30	180MC	300	20	350	6	400	M16	48	51.8	14
40	180LC	300	20	350	6	400	M16	55	59.3	16
50 / 60	200LC	350	20	400	6	450	M16	60	64.4	18

This dimensional table is with specific frame sizes for TECO motor.  
International IEC motor dimensions are referred to the specification as below.  
本表適用於台灣東元馬達(4P)，如使用國際IEC馬達，請參照各型號尺寸圖下方表格。